

CLOCK TROUBLESHOOTING

BE0D1-02

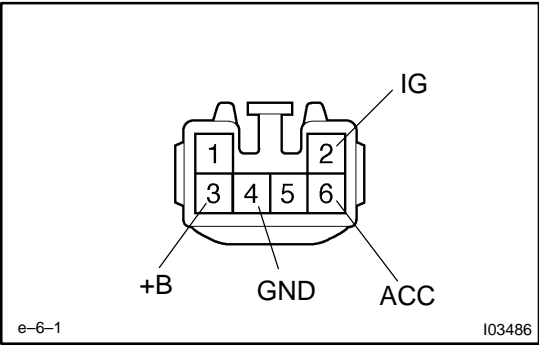
HINT:

Problem	No.
Clock will not operate	1
Clock loses or gains time	2

± 1.5 seconds / da

1. PROBLEM No.1

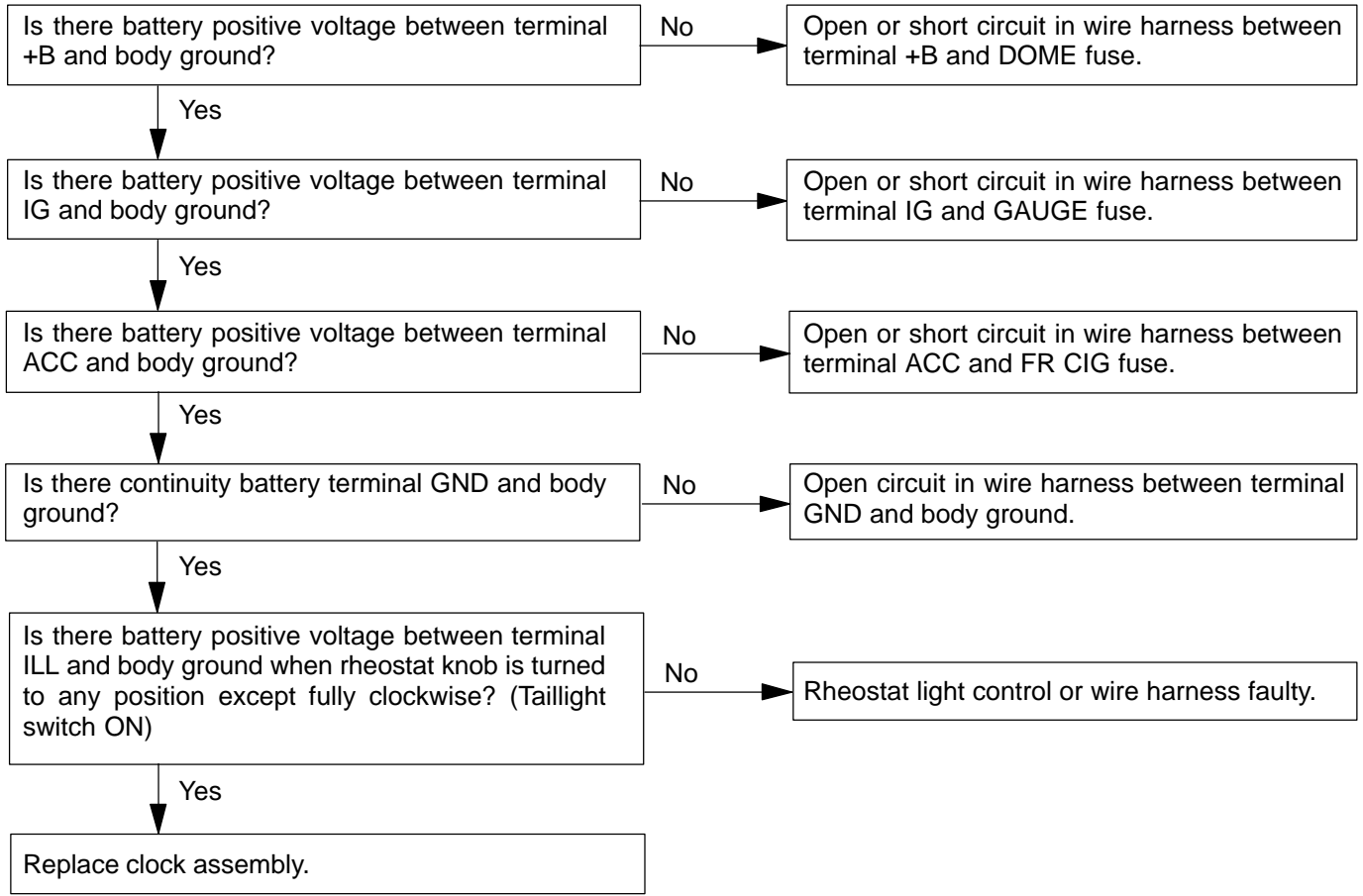
1	CLOCK WILL NOT OPERATE
---	------------------------



- (a) Turn the ignition switch ON.
- (b) Check that the battery positive voltage is 10 – 16 V. If voltage is not as specified, replace the battery.
- (c) Check that the DOME FR, GAUGE and FR CIG fuses in not below.
- (d) Troubleshoot the clock as follows.

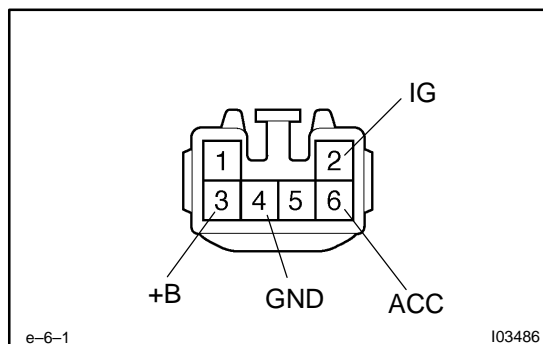
HINT:

Inspect the connector on the wire harness side.



2. PROBLEM No.2

2 CLOCK LOSES OR GAINS TIME



(a) Check that the battery positive voltage is 10 – 16 V. If voltage is not as specified, replace the battery.

(b) Inspect the error of the clock.

Allowable error (per day): ± 2.0 seconds

If the error exceeds the allowable error, replace the clock assembly.

(c) Check if the clock adjusting button is sticking in position and has failed to return.

(d) Troubleshoot the clock as follows.

HINT:

Inspect the connector on the wire harness side.

